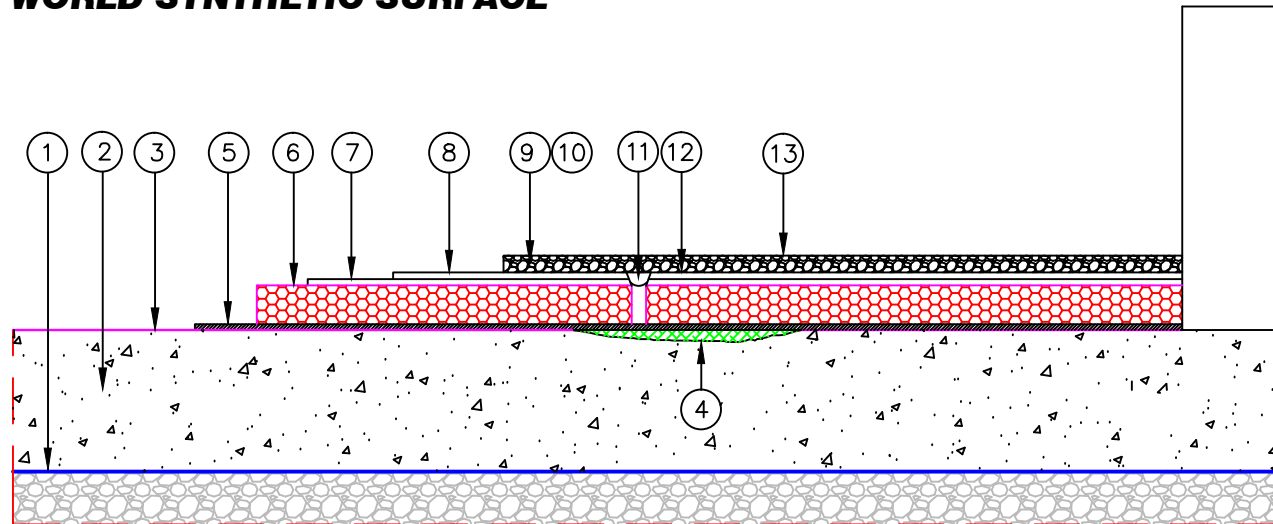


**BOCCE BUILDERS OF AMERICA
WORLD SYNTHETIC SURFACE**



- | | |
|--------------------------------------|-------------------------------------|
| 1. UNDER SLAB 15 MIL VAPOR BARRIER | 8. CLEAR PVC |
| 2. CONCRETE SUBFLOOR | 9. EMBEDDING RESIN |
| 3. MOISTURE CONTROL SYSTEM | 10. EPDM |
| 4. LEVELING COMPOUND | 11. 5MM WELD ROD |
| 5. TWO-PART POLYURETHANE ADHESIVE | 12. EMBEDDING RESIN OVER WELD JOINT |
| 6. HIGH DENSITY CLOSED CELL PVC FOAM | 13. CLEAR FINISH LAYER |
| 7. PVC/FIBERGLASS LAYER | |